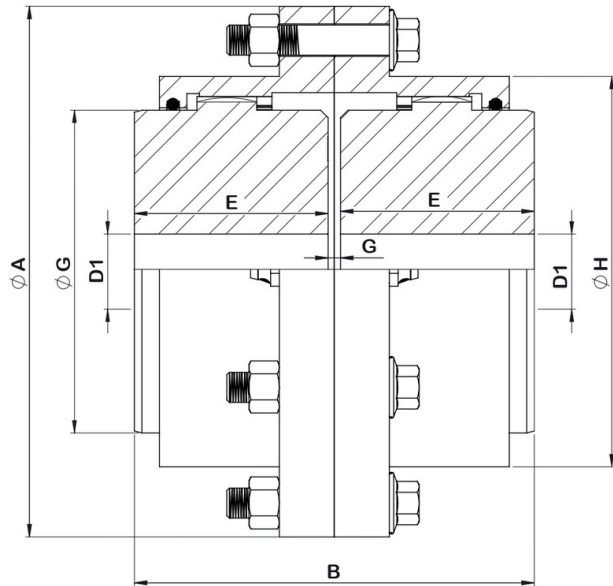
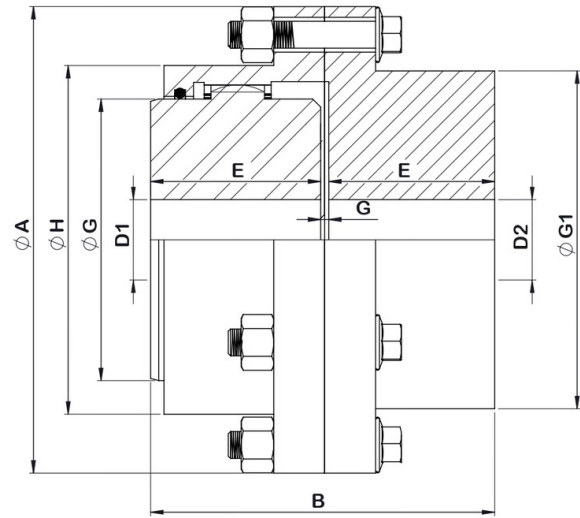


Gear Couplings

EGC



**Full Gear
EGC - 01 TO 19**



**Half Gear Half Rigid
EGC - 01 TO 13**

Dimensions & Technical Data

Size	Kw @ 100 Rpm	Rated Torque (Nm)	Max. Speed Rpm	Dimensions (mm)											No. of Bolts	#		
				Bore Range			ØA	B	ØG	ØG1	ØH	E	G	Bolt Size		Appx. Weight (Kg)		M.I. (Kg-m ²)
				Min.	Max. (D1)	Max. in Rigid (D2)										Full Gear	Half Gear Half Rigid	
01	14.0	1350	7000	15	45	55	113	93	66	78	80	45	3	M8 X 38	6	4.0	4.4	0.006
02	29.8	2850	6200	20	60	75	144	105	86	101	104	51	3	M10 X 50	8	8.3	8.6	0.018
03	53.0	5060	5650	30	75	95	174	130	105	126	130	63	3	M12 X 55	6	14.9	14.9	0.047
04	105.0	10000	5100	30	95	110	212	160	129	152	156	77	5	M16 X 65	6	25.8	26.8	0.126
05	168.0	16050	4700	40	110	130	234	185	154	178	181	90	5	M16 X 65	8	37.8	38.4	0.234
06	231.0	22010	4350	40	130	155	274	216	178	208	209	105	6	M20 X 85	8	63.0	65.0	0.541
07	335.5	32064	4000	50	155	180	312	246	213	245	247	120	6	M20 X 85	8	94.3	97.0	0.631
08	472.0	45072	3800	50	175	200	337	278	235	271	273	135	8	M20 X 85	10	126.27	129.0	1.717
09	650.0	62075	3600	70	195	230	380	308	263	306	307	150	8	M20 X 105	10	174.0	177.0	2.944
10	880.0	84100	3450	100	215	240	405	358	286	330	338	175	8	M20 X 105	14	227.0	236.0	4.721
11	1125.0	115000	2300	100	235	260	448	400	315	376	382	195	10	M20 X 105	14	312.2	320.0	7.956
12	1700.0	174000	2200	120	275	300	510	450	376	430	440	220	10	M24 X 85	14	460.0	455.0	15.18
13	2600.0	275000	1900	120	280	315	555	540	400	470	494	265	10	M24 X 90	16	679.7	605.0	29.56
14	3980.0	380090	1400	150	355	-	690	575	465	-	565	280	15	M30 X 110	16	915.0	-	53.13
15	4713.0	450092	1395	150	385	-	735	636	500	-	605	310	16	M30 X 110	18	1183.0	-	78.08
16	6000.0	573000	1200	200	450	-	820	696	574	-	685	340	16	M36 X 120	18	1630.0	-	133.66
17	7900.0	754450	1000	200	480	-	895	776	610	-	755	380	16	M36 X 120	20	2190.0	-	232.77
18	9424.0	899992	940	250	515	-	920	796	665	-	780	410	20	M36 X 120	20	2456.0	-	255.42
19	11600.0	1107800	900	250	540	-	995	925	700	-	840	450	25	M36 X 150	22	3195.0	-	421.74

We reserve the right to alter or change specifications without prior notice. # Weight & Moment of Inertia are at pilot bore.

Material Specifications

Sleeve	Forged Steel	up to 10	IS 1570
Sleeve	Cast Steel	11 - 19	IS 1030
Hub	Forged Steel	All Size	IS 1570
Bolts	High Tensile	All Size	IS 1570
O Ring	NBR	All Size	IS 1719

*Other options are also available in material specifications on request

*EGC couplings are also available with spacer, brake drum, brake disc, floating shaft on request