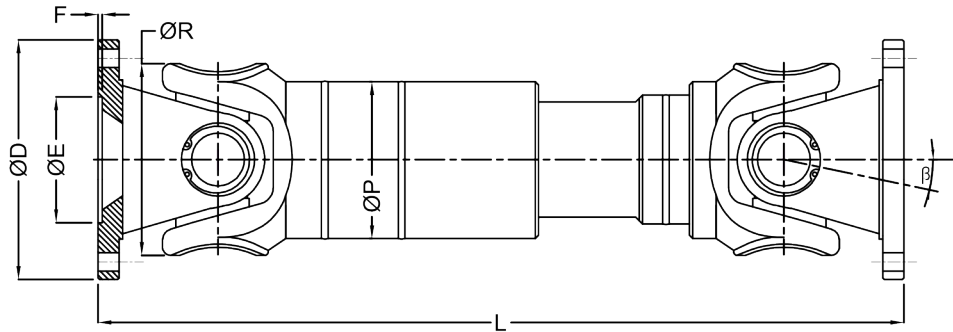
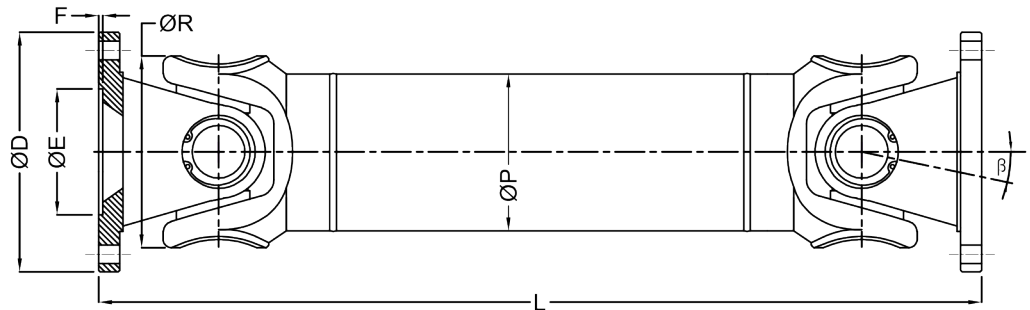


# Cardan Shafts

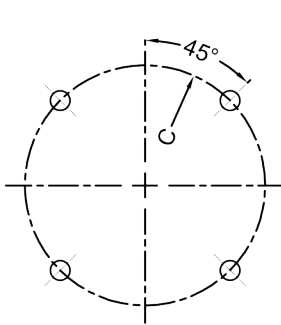
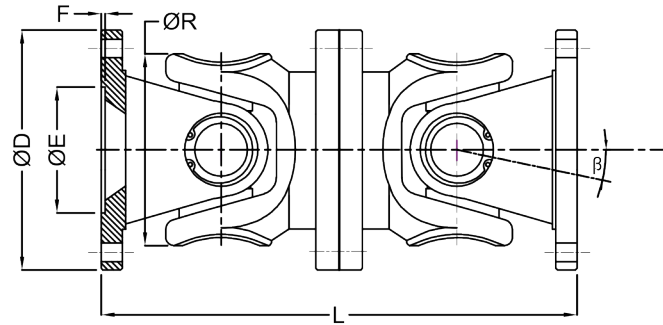
**Type A:**  
with length compensation



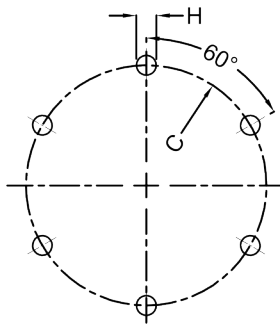
**Type B:**  
without length compensation



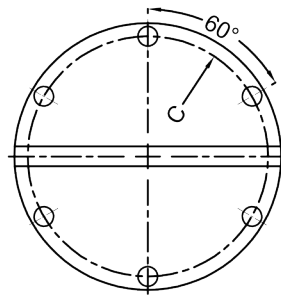
**Type C:**  
without length compensation,  
double flange



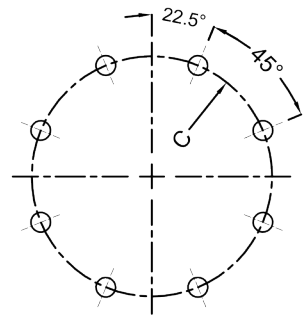
n = 4 Nos.



n = 6 Nos.



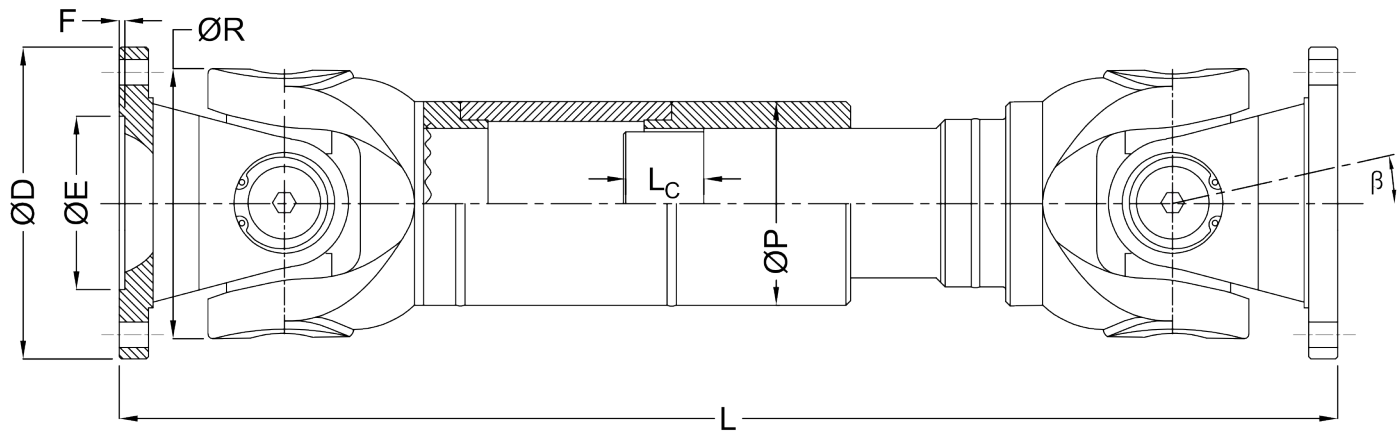
n = 6 Nos.



n = 8 Nos.

# Cardan Shafts

**KCS**  
Light-Medium Design



Standard shaft with length compensation

Size	Torque		Dimensions (mm)												Holes n
	Tn Nm	Tf Nm	ØD	ØE H9	F	ØR	P.C.D C ± 0.1	H +0.2	ØP	β	Lc	A Type L	B Type L	C Type L	
75/80	510	250	75	42	2	72	62	6	50	30°	40	390	325	180	6
90	810	400	90	47	2.5	92	74.5	6.5	50	30°	40	410	375	208	4
100	1220	600	100	57	2.5	100	84	8.5	68	30°	50	440	400	220	6
120	2350	1160	120	75	2.5	98	101.5	8.5	68	30°	60	480	425	246	8
130	3400	1700	130	90	3	112	110	10.5	95	25°	80	500	450	328	8
146	4600	2300	146	95	3	126	120	12.5	95	22°	70	500	450	254	4
150	5600	2800	150	90	3	112	130	12.5	95	30°	80	500	450	328	8
175	9000	4500	175	132	2	153	155.5	10	100	22°	80	550	500	280	8
180	10000	5000	180	95	3	160	155.5	13	100	20°	80	560	500	340	8
180H	14000	7000	180	110	3	160	155.5	14.1	106	20°	80	600	540	380	8
204	15000	7500	204	170	3	170	184	14.1	106	22°	100	580	520	380	8
204H	22000	11000	204	140	3	170	184	16	115	22°	100	620	560	380	8
225	24000	12000	225	140	3	170	196	16	120	25°	110	625	560	380	8
230	25200	12600	230	140	3	170	205	16	125	20°	120	650	600	380	8
242	27000	13500	242	140	3	170	210	16	125	18°	140	680	620	380	8
250	27000	13500	250	140	3	170	218	17	125	18°	140	680	650	380	8

In view of our constant endeavour to improve the quality of our products, we reserve the right to alter or change specifications without prior notice.