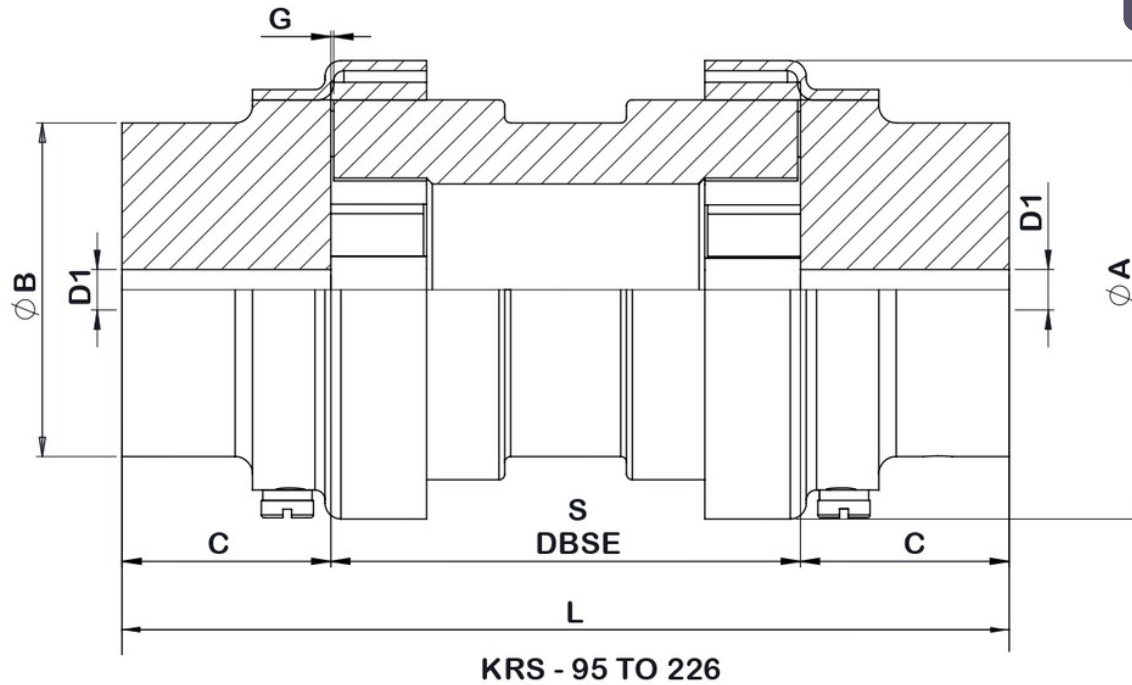


## Jaw Spacer Couplings Snap Wrap

KRS



### Dimensions & Technical Data

Size	Kw @ 100 Rpm	Rated Torque (Nm)	Dimensions (mm)							Appx. Weight (Kg)	
			Bore Range		ØA	ØB	C	G	DBSE 'S'		L
			Pilot Drill Size	Max. (D1)							
95	0.22	21.0	-	28	65	49	25	2	90/100/140	140/150/190	Please contact us
100	0.49	46.4	-	35	78	57	35	2		160/170/210	
110	0.93	89.0	-	42	96	76	43	3		176/186/226	
150	1.49	141	-	48	111	80	45	3	90/100/140/180	180/190/230/270	
190	2.01	190	-	60	129	102	54	3		198/208/248/288	
225	2.76	265	-	65	142	108	64	3		218/228/268/308	
226*	3.43	327	25	70	153	119	70	3		230/240/280/320	

In view of our constant endeavour to improve quality of our products, we reserve the right to alter or change specifications without prior notice.

\*T cushion/elastomer size 226

#### Material Specifications

Component	All Size	Material	DIN 1691	ASTM 48 <sup>a</sup>	IS 210
Hub	All Size	Cast Iron	DIN 1691	ASTM 48 <sup>a</sup>	IS 210
DBSE	All Size	Aluminium	BS 1490-LM4	-	-
Outer Ring	All Size	Cast Steel	-	-	IS 1030
Elastomer	All Size	NR	ASTM D2000		-
Elastomer	All Size	NBR*	ASTM D2000		-

\*NBR elastomer on request